



MAJOR Scales Guitar Workout

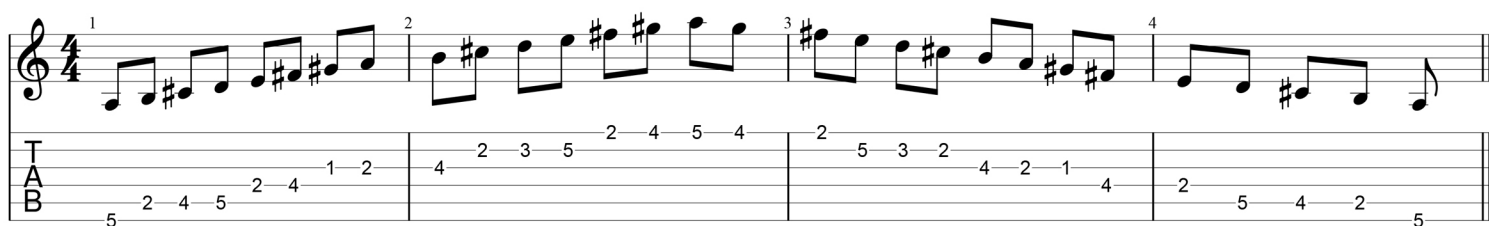
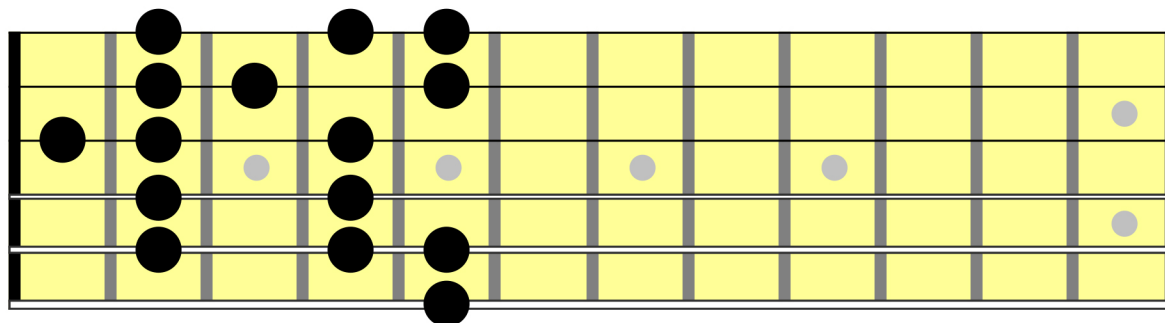
Eddie Haddad

Note: The scale patterns on the diagrams are laid out in a top-down view.

Think of it like you're looking down at your fretboard while your guitar is in your lap. The low E string will appear on the bottom and the high E appears on the top.

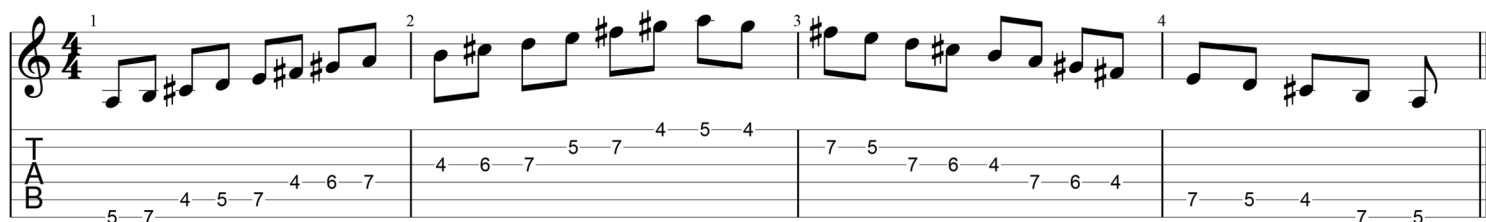
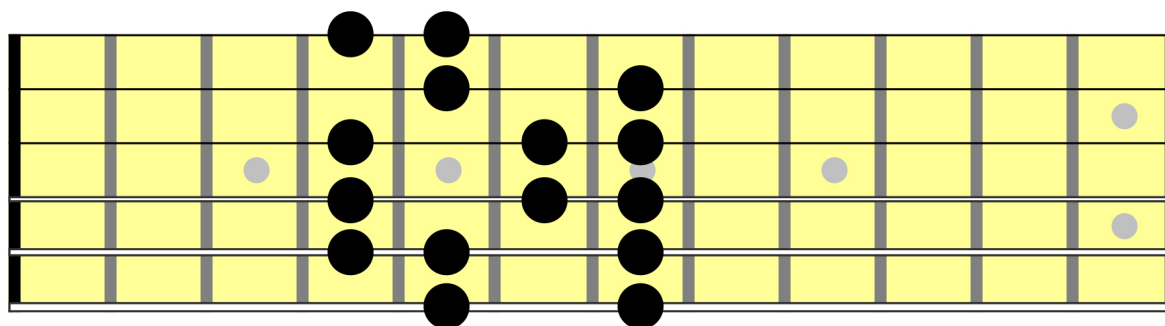
In the video the diagram is flipped just to match up with the camera angle :)

“Pinky Pattern” Major Scale





“Middle Pattern” Major Scale



“Index Pattern” Major Scale

